



For level and interface measurement

MICROWAVE SENSORS

Microwave sensors are used for measuring the level of solids and liquids as well as interfaces.

The guided radar pulses along the probe ensure precise and stable measurement even with dust-forming and foamy media. The measuring principle and mechanical construction make our microwave sensors ideal for harsh environments.

The most important benefits

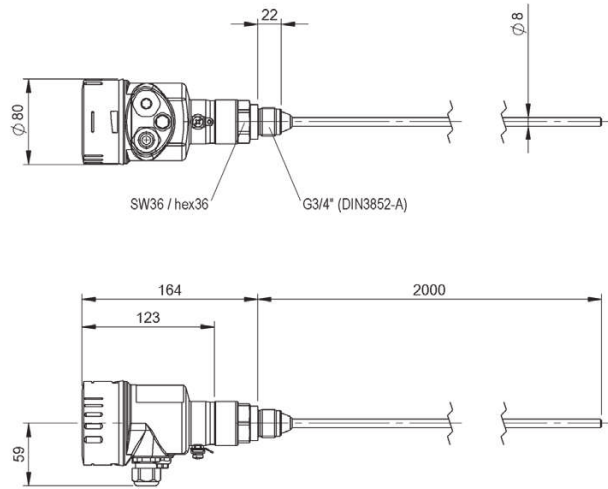
- Precise, absolute level measurement
- Suitable for solids and liquids
- Wear- and maintenance-free
- High degree of protection
- Insensitive to shock and vibration
- High durability and long service life
- Flexible installation and handling



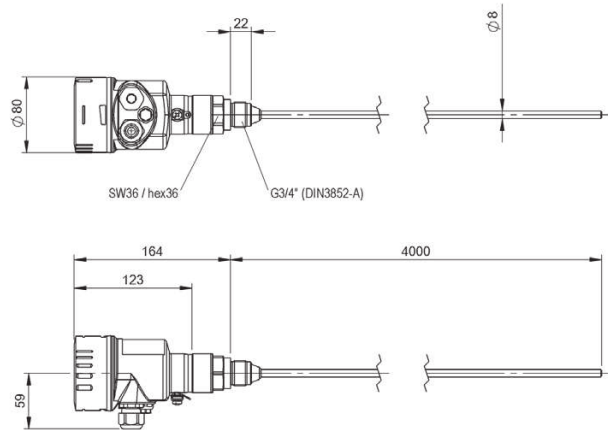
	BMD001R BMD 1LTA-2000/10A-AE520A-KM20K	
Analog output	Analog, current 4...20 mA	
Interface	HART	
Reproducibility	≤ ±1 mm	
Non-linearity max.	±2 mm	
Cycle time min.	500 ms	
Operating voltage Ub	16...35 VDC	
Ambient temperature	-40...80 °C	
Housing material	Stainless steel	
Protection degree	IP66, IP68 IP68 (0.2 bar)	
Connection	Terminal, M20x1.5-Introduction	
Approval/Conformity	CE, EAC	
Productview	Page 384	



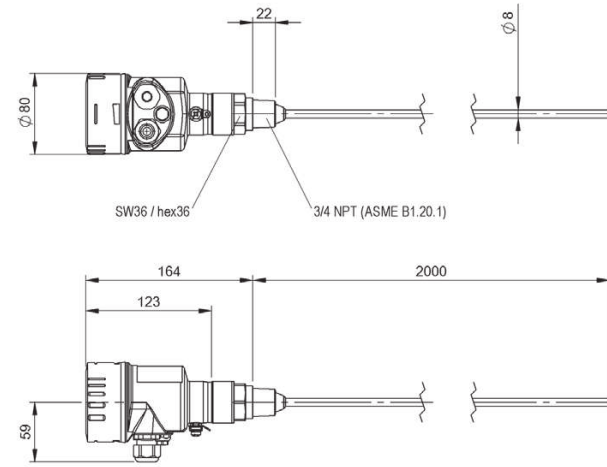
	BMD001T BMD 1LTA-4000/10A-AE520A-KM20K	BMD001U BMD 1LTD-2000/10F-AE520A-KM20K	BMD001W BMD 1LTD-4000/10F-AE520A-KM20K
Analog output	Analog, current 4...20 mA	Analog, current 4...20 mA	Analog, current 4...20 mA
Interface	HART	HART	HART
Reproducibility	≤ ±1 mm	≤ ±1 mm	≤ ±1 mm
Non-linearity max.	±2 mm	±2 mm	±2 mm
Cycle time min.	500 ms	500 ms	500 ms
Operating voltage Ub	16...35 VDC	16...35 VDC	16...35 VDC
Ambient temperature	-40...80 °C	-40...80 °C	-40...80 °C
Housing material	Stainless steel	Stainless steel	Stainless steel
Protection degree	IP66, IP68 IP68 (0.2 bar)	IP66, IP68 IP68 (0.2 bar)	IP66, IP68 IP68 (0.2 bar)
Connection	Terminal, M20x1.5-Introduction	Terminal, M20x1.5-Introduction	Terminal, M20x1.5-Introduction
Approval/Conformity	CE, EAC	CE, EAC	CE, EAC
Productview	Page 384	Page 385	Page 385



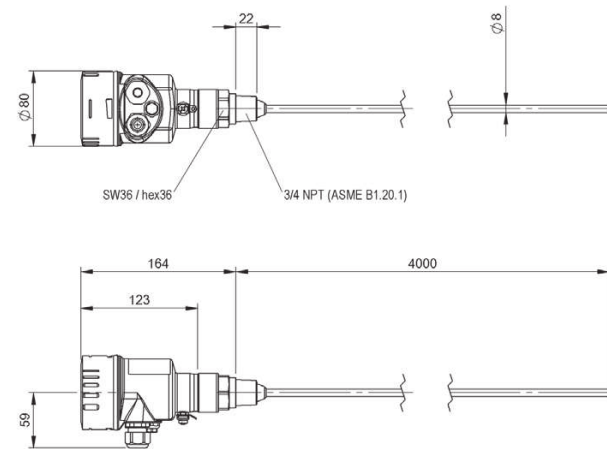
BMD001R



BMD001T



BMD001U



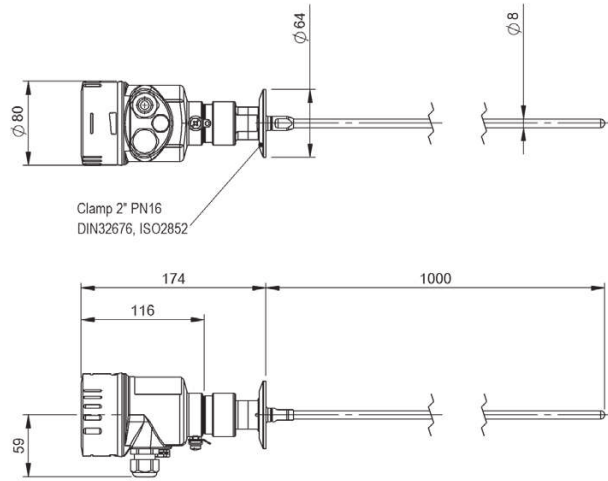
BMD001W



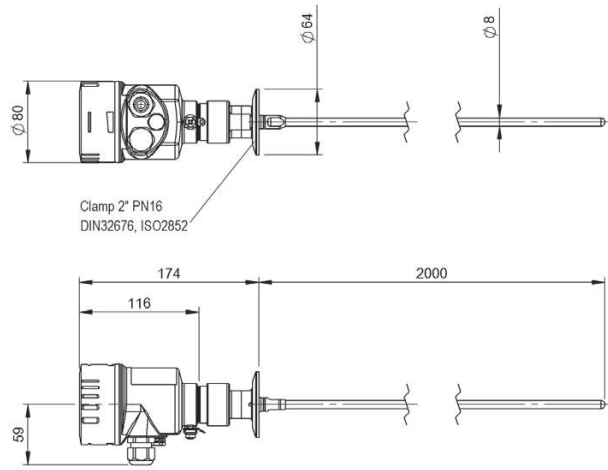
	BMD001L BMD 1HLA-1000/41C-AE520A-KM20K	
Analog output	Analog, current 4...20 mA	
Interface	HART	
Reproducibility	≤ ±1 mm	
Non-linearity max.	±2 mm	
Cycle time min.	500 ms	
Operating voltage Ub	16...35 VDC	
Ambient temperature	-40...80 °C	
Housing material	Stainless steel	
Protection degree	IP66, IP68 IP68 (0.2 bar)	
Connection	Terminal, M20x1.5-Introduction	
Approval/Conformity	CE, EAC, FDA compliant	
Productview	Page 388	



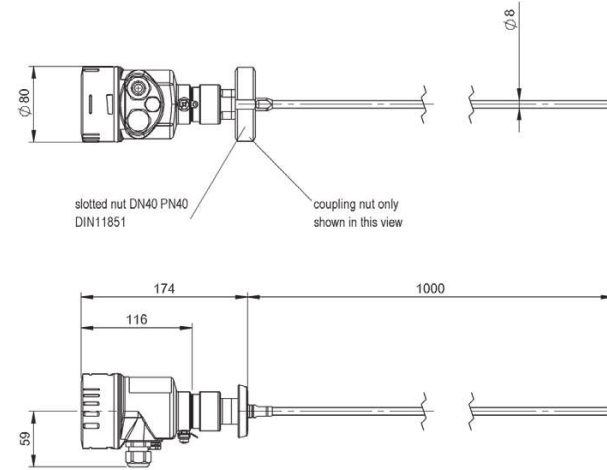
	BMD001M BMD 1HLA-2000/41C-AE520A-KM20K	BMD001N BMD 1HLF-1000/41C-AE520A-KM20K	BMD001P BMD 1HLF-2000/41C-AE520A-KM20K
Analog output	Analog, current 4...20 mA	Analog, current 4...20 mA	Analog, current 4...20 mA
Interface	HART	HART	HART
Reproducibility	≤ ±1 mm	≤ ±1 mm	≤ ±1 mm
Non-linearity max.	±2 mm	±2 mm	±2 mm
Cycle time min.	500 ms	500 ms	500 ms
Operating voltage Ub	16...35 VDC	16...35 VDC	16...35 VDC
Ambient temperature	-40...80 °C	-40...80 °C	-40...80 °C
Housing material	Stainless steel	Stainless steel	Stainless steel
Protection degree	IP66, IP68 IP68 (0.2 bar)	IP66, IP68 IP68 (0.2 bar)	IP66, IP68 IP68 (0.2 bar)
Connection	Terminal, M20x1.5-Introduction	Terminal, M20x1.5-Introduction	Terminal, M20x1.5-Introduction
Approval/Conformity	CE, EAC, FDA compliant	CE, EAC, FDA compliant	CE, EAC, FDA compliant
Productview	Page 388	Page 389	Page 389



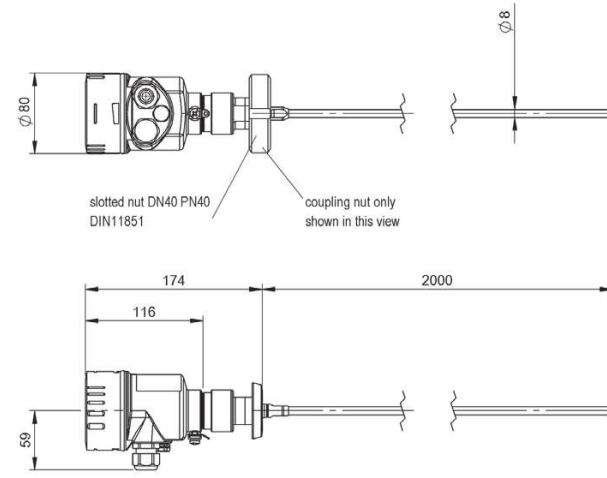
BMD001L



BMD001M



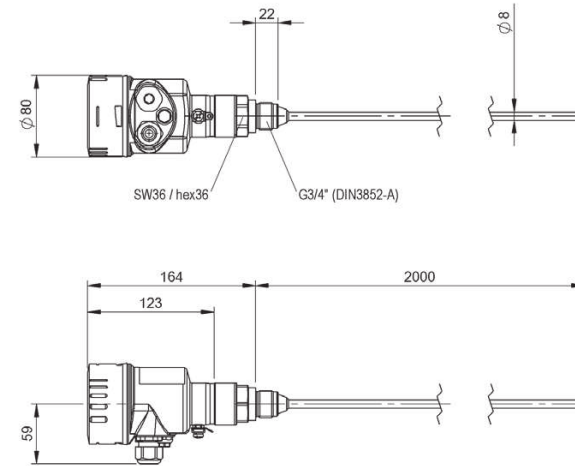
BMD001N



BMD001P



	BMD001Y BMD 1LTA-2000/10A-AE520K-KM20K
Analog output	Analog, current 4...20 mA
Interface	HART
Reproducibility	≤ ±1 mm
Non-linearity max.	±2 mm
Cycle time min.	500 ms
Operating voltage U _b	16...35 VDC
Ambient temperature	-40...80 °C
Housing material	Stainless steel
Protection degree	IP66, IP68 IP68 (0.2 bar)
Connection	Terminal, M20x1.5-Introduction
Approval/Conformity	CE, EAC, ATEX, TÜV, IECEx



BMD001Y